



Features

- Wiring with Faston terminal
- High attenuation by using a ferrite core with broad frequency characteristic
- Wide rating up (5, 8, 10, 15, 20 Ampere)
- Bleeder resistor for electric shock protection
- DIN rail type is option

Applications

- Information processing machines, Copiers, Fax machines, and Various control systems

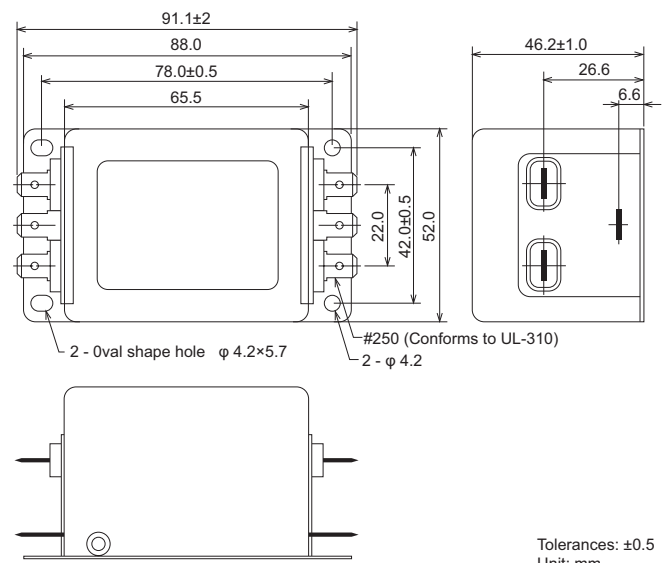


Safety Standard		File No.
UL	:UL1283	E78644
cUL	:C22.2, No.8-M1986	
SEMKO	:EN60939	SE/0142-2

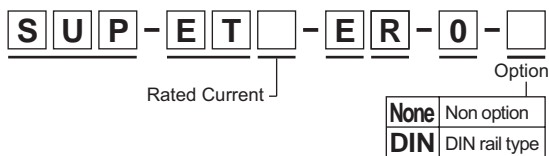
The "ENEC" mark is a common European product certification mark based on testing to harmonised European safety standard.



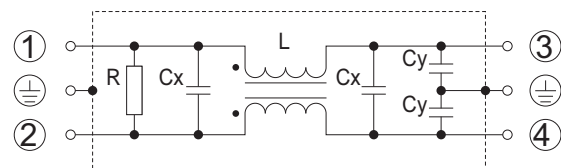
• Dimensions (5 ~ 20A)



• Model numbering system



• Circuit



Electrical Specifications

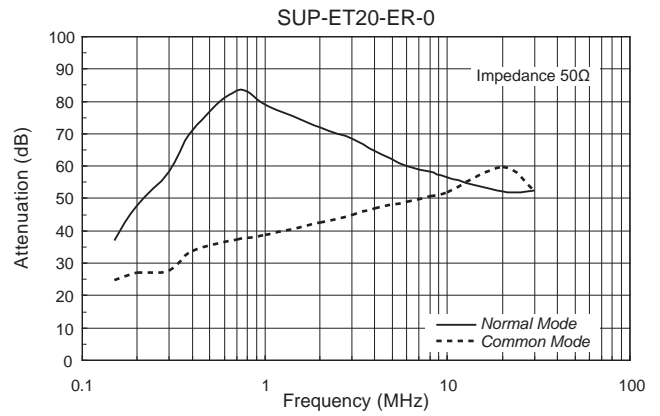
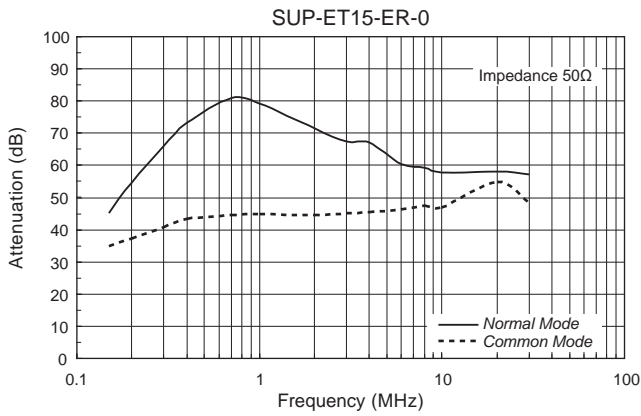
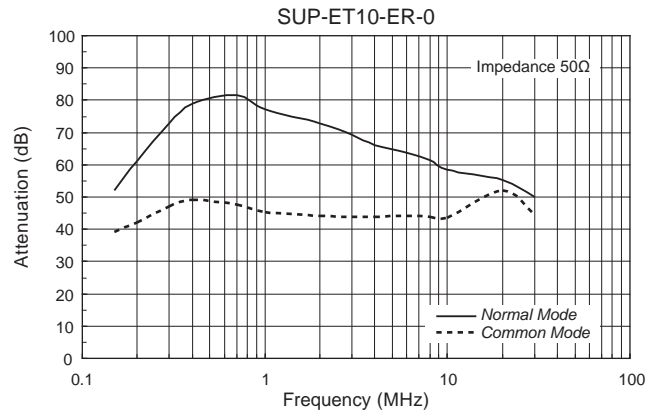
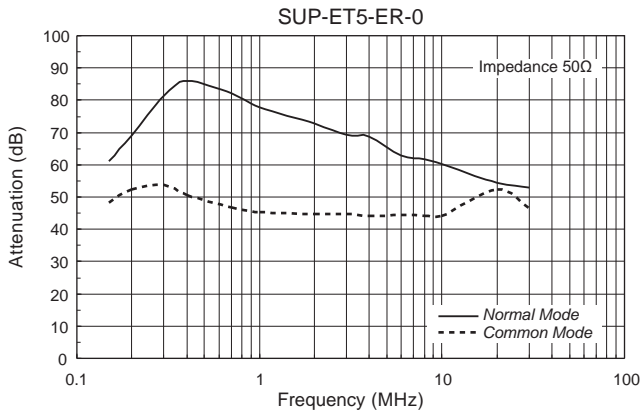
Rated Voltage **250Vac**

Safety Standard	Model Number	Rated Current (A)	Test Voltage	Insulation Resistance	Leakage Current max.	Voltage Drop max.	Temperature Rise max.	Operating Temperature (°C)	Insertion losses		Weight typ.(g)
									Normal Mode (MHz)	Common Mode (MHz)	
	SUP-ET5-ER-0	5	Line to Case 1,500Vac 50/60Hz 60sec	Line to Case 100M Ω min (at 500Vdc)	0.6mA (at 250Vac 60Hz)	1.0Vac	45K	-25 ~ +55 (100°C with Temp. rise)	0.2 ~ 20	0.15 ~ 20	250
	SUP-ET8-ER-0	8								0.2 ~ 20	
	SUP-ET10-ER-0	10								0.5 ~ 20	
	SUP-ET15-ER-0	15								2.0 ~ 20	
	SUP-ET20-ER-0	20								2.0 ~ 20	

Guaranteed attenuation is more than 40dB in normal mode and more than 30dB in common mode.

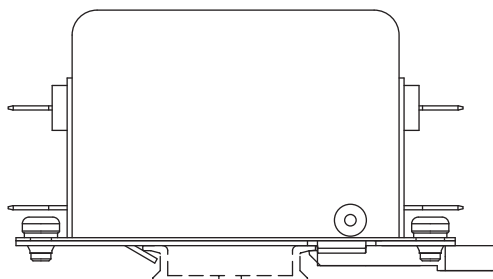
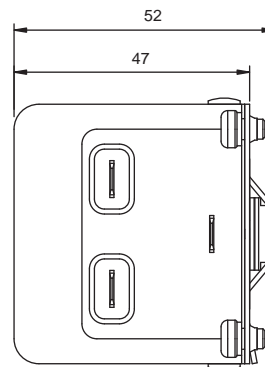
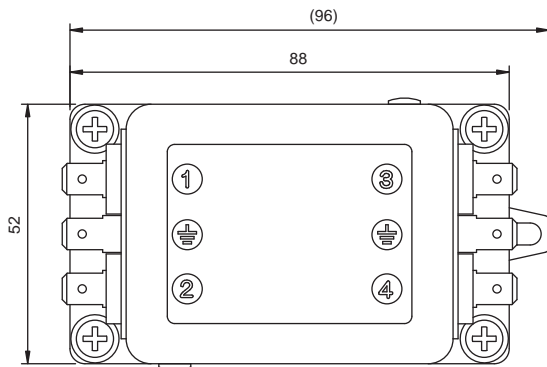


● *Static characteristics*



● *Dimensions*

DIN rail type (option)



Tolerances: ±0.5
Unit: mm

- *Note when installing EMI filter on DIN rail*
Even though the ground connects correctly through the DIN rail, may not get noise attenuation. Be sure to connect the FG ground of EMI filter to the ground directory.