



### Features

- Light and compact size
- Leak current lower than 10mA(250Vac, 60Hz)

### Applications

- Medical equipments, Thyristor-applied systems, Fax machines, Game machines, Control systems, etc.

- SUP-Q□H-3 Series



### Features

- Light and compact size

### Applications

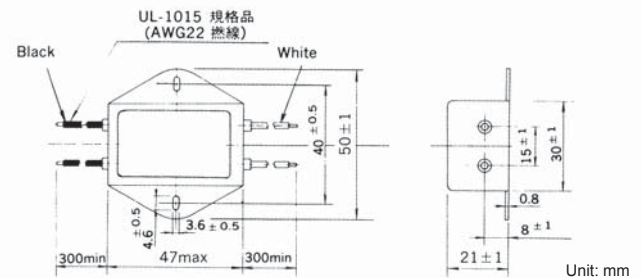
- Thyristor-applied systems, Fax machines, Game machines, Control systems, etc.

- SUP-Q□H-E (P) -3E Series



- Dimensions

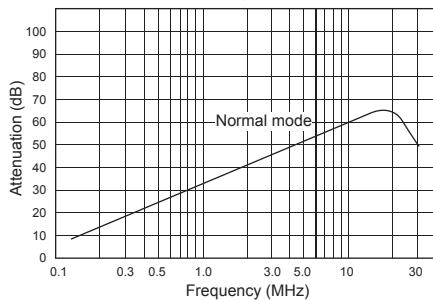
### SUP-QH,QH-E,QH-EP



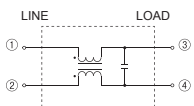
Unit: mm

- Static characteristics

SUP-Q3H-3

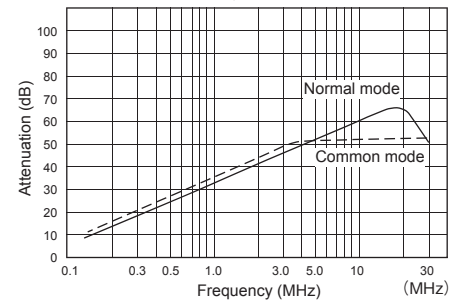


- Circuit

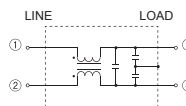


- Static characteristics

SUP-Q3H-EP-3



- Circuit



## Electrical Specifications

Rated Voltage **250Vac**

Model Number	Rated Current (A)	Test Voltage	Insulation Resistance	Leakage Current max.	Voltage Drop max.	Temperature Rise max.	Operating Temperature (°C)	Insertion losses		Weight typ.(g)
								Normal Mode (MHz)	Common Mode (MHz)	
SUP-Q1H-3	1	Line to Ground 2,000Vac 50/60Hz 60sec	Line to Line 1,000MΩmin Line to Ground 1,000MΩmin (at 500Vdc)	10μA (at 250Vac 60Hz)	0.6Vac	30K	-20 ~ +55 (85°C with Temp. rise)	2 ~ 30	-	51
SUP-Q3H-3	3							3 ~ 30		
SUP-Q6H-3	6			2 ~ 30				0.8 ~ 30	51	
SUP-Q1H-E (P) -3	1			3 ~ 30				2 ~ 30		
SUP-Q3H-E (P) -3	3			*3 ~ 30				*3 ~ 30	53	
SUP-Q6H-E (P) -3	6									

Guaranteed attenuation is more than 40dB in normal mode and more than 25dB in common mode. (\*more than 20dB)